

# In-house Dedicated Veterinary MRI solutions



## Innovative Veterinary MRI solutions

High performance is the key when it comes to the Vet-MR Grande, an innovative MR system that covers the imaging requirements of small animals and large dogs. It is a result of years of experience and collaboration with luminary sites and therefore offers the smartest solution for Radiologists, Neurologists, Orthopedists and any veterinary practice that requires excellent diagnostic capabilities without having to rely on outside MR providers.



## Dedicated software

Vet-MR Grande speaks the veterinary language. The system has been developed in close collaboration with veterinary doctors, in fact it features correct vet terminology and image orientation that, together with an appropriate patient set-up scheme, allow for an easy exam management.

## Examination

Vet-MR Grande provides a wide range of preprogrammed protocols that are optimized for veterinary requirements and tested at research sites; it also offers the possibility to create customized protocols, according to specific clinical needs.

## Ready for teleradiology

Vet-MR is full DICOM compliant and offers smart solutions for connectivity and teleradiology, featuring the standard Dicom classes.

## Pet monitoring

With Vet-MR Grande the ease of monitoring and accessibility to the patient reduces risk during the exam; furthermore, the specific design of the system allows the use of existing anaesthesia equipment\*.

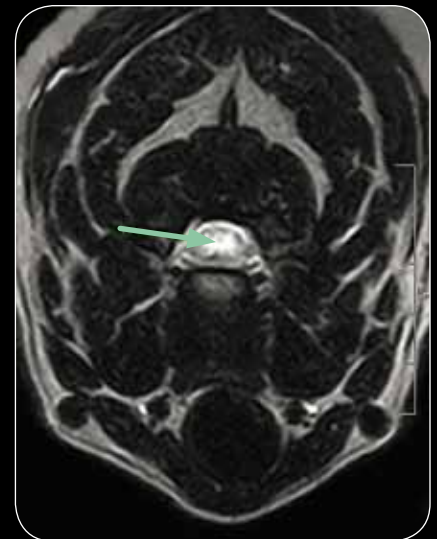
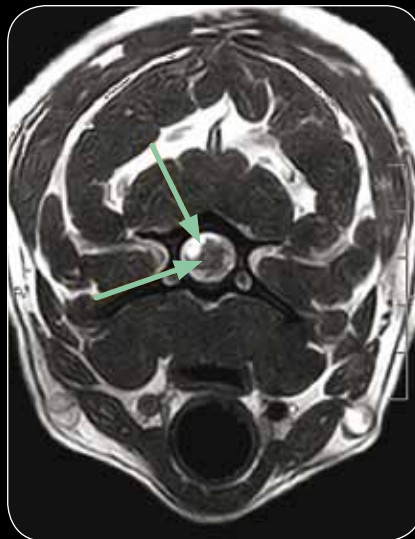
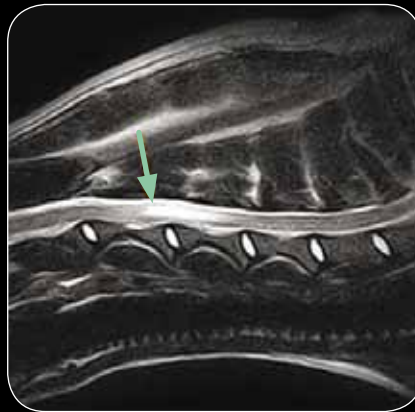


# Outstanding image quality

## Vet-MR Grande's image quality is unsurpassable

### > Subarachnoid cyst

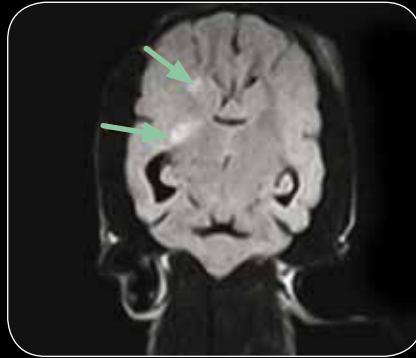
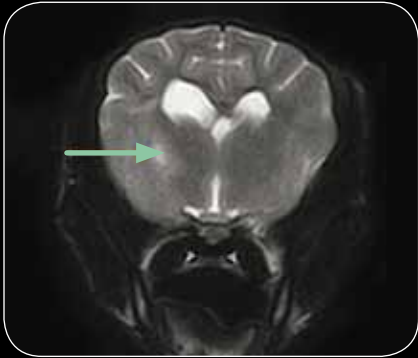
Hyperintense signal in the sagittal plane with FSET2 and in the dorsal plane with the Hyce 3D; comparison of FSET2 and 3DHYCE in the transverse plane completes the diagnosis



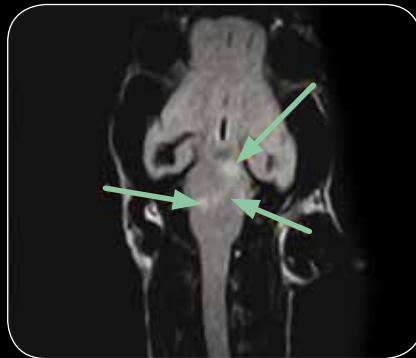
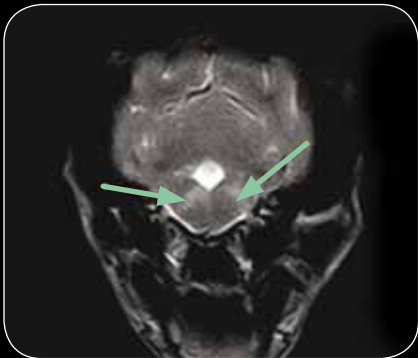
### > DPA spine coil image quality

FSE T2 and SE T1, sagittal of the  
lumbosacral spine

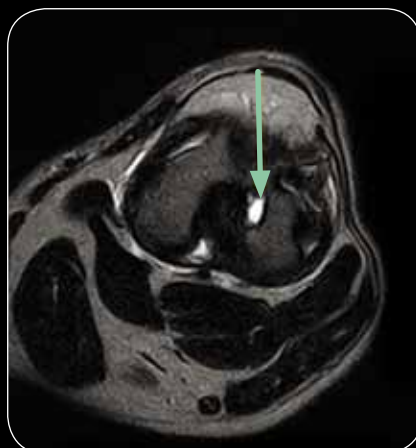




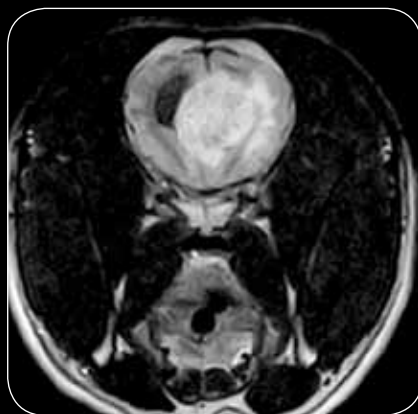
> **Encephalitis - Hyperintensity**  
clearly seen in two different dorsal planes  
with the FLAIR T2 weighted sequence  
and in the transverse planes with FSE T2  
sequence



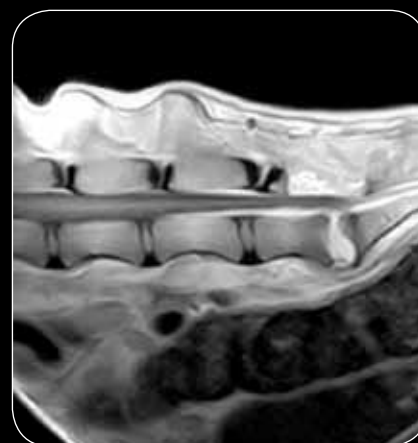
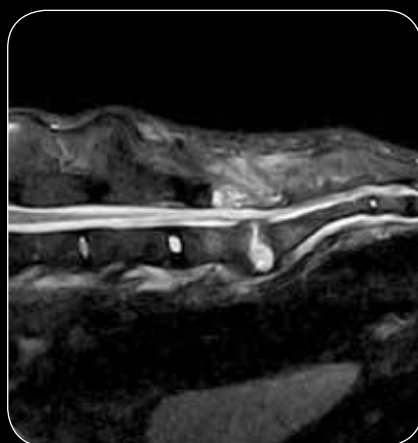
> **Meniscal tear**  
cranial cruciate ligament rupture and  
bone cyst knee joint program, seen in  
the sagittal plane with the FSE T2 and  
XBONE, coronal plane with GE T2\*; and the  
transverse plane with the FSET2



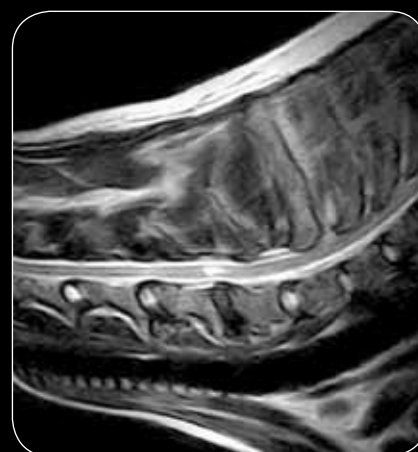
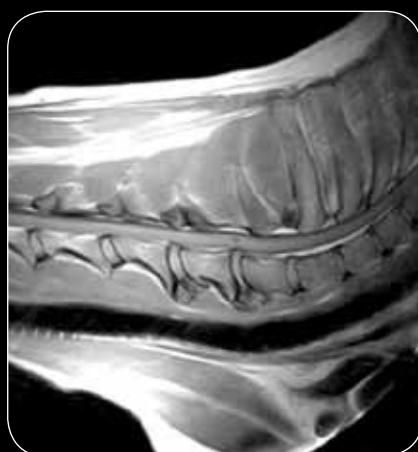
- > **Frontal glioma**  
seen in the transverse plane with the FLAIR and FSE T2 sequence



- > **Lumbosacral discospondylitis**  
in sagittal plane with STIR T2 sequence and SET1 post contrast



- > **Caudal cervical spondylomyelopathy (CCSM): intramedullary lesion.**  
Sagittal plane with SE T1 and FSE T2



> Images courtesy of:  
Dr Massimo Baroni, DVM, Dipl. ECVN Clinica Veterinaria Valdinievole  
Dr Martin Konar, DVM, Dipl. ECVDI, Ospedale Veterinario San Michele

## Shaped to meet Veterinary needs

Vet-MR Grande is fully customized to meet veterinary needs and is very user-friendly in fact the operator can get familiar with the system after just a short training period on site.

### Soft tissue visualization

MR is recognized as being the method of choice for soft tissue imaging. Vet-MR Grande includes a complete set of dedicated receiving coils tailored for the specific anatomical region which provide high image quality.

### DPA spine coil

Esaote's quest to continuously improve its systems' performance and enhance image quality has resulted in the introduction of the new DPA spine coil specifically developed and designed to satisfy clinical needs when executing spine examinations on medium/large breed dogs.

Better signal penetration in the inner region of the spine of medium/large dogs, extended coverage of the FOV and easier animal positioning are just some of the benefits of using the DPA spine coil.



## Vet-MR Grande technology

- ✔ Maintenance-free open permanent magnet
- ✔ 0.25 Tesla field
- ✔ Max RF power: 2100 W (2 amps)
- ✔ Shimming: passive
- ✔ Gradient:  $\pm 20$  mT/m
- ✔ Slew rate: 25 mT/m/ms
- ✔ FOV: 25 cm
- ✔ Installation space of 25 m<sup>2</sup> required
- ✔ Low Power Consumption:  
1.3 - 2 kW (max) in normal 220/110 V power outlet
- ✔ Complete set of dedicated linear and DPA coils
- ✔ Acquisition sequences: FSE T1, FSE T2, X-Bone, 3d Hyce, Fast STIR, FLAIR, STIR, SE and GE



## Easy patient handling

Among its many attributes, the Vet-MR Grande boasts a wide opening which makes animal handling extremely easy, even for very large animals.

Positioning is very fast also because of the real-time feature panel located on the system gantry that continuously visualizes the anatomy position; afterwards a localizer (scout) scan is performed simultaneously in the three orthogonal directions.



## Smart Investment

Vet-MR Grande is an intelligent and affordable investment.

It has a maintenance-free permanent magnet, no special cooling systems are required and power consumption is very low (max 2 kW) meaning that it can be run from a standard power outlet. The total operating costs of Vet-MR Grande are very low thanks to its easy siting, minimal running costs and the limited initial investment.

## Service on line

The remote service program ARAS specially developed for Esaote MR systems, enables service technicians to connect directly to any Esaote MRI unit for immediate check-up and troubleshooting.



ISO13485:2003 ISO 9001:2008



**Esaote S.p.A.**

International Activities: Via di Caciolle, 15 50127 Florence, Italy, Tel. +39 055 4229 1, Fax +39 055 4229 208, international.sales@esaote.com

[www.esaote.com](http://www.esaote.com)

<p><b>FRANCE</b> Esaote France S.A.R.L. ZA du Bel Air 10, rue de Témara, 78108 Saint Germain en Laye Tel. +33 1 8204 8945, Fax +33 1 3061 7210 info@esaote.fr</p>	<p><b>GERMANY</b> Esaote Biomedica Deutschland GmbH Max-Planck-Straße 27a, 50858 Köln Tel. +49 221 9268 00 00, Fax +49 2234 9679 628 info@esaote.de</p>	<p><b>SPAIN</b> Esaote España S.A. Avenida San Sebastian, s/n 08960 Sant Just Desvern, Barcelona Tel. +34 93 473 2090, Fax +34 93 473 2042 info@esaote.es</p>	<p><b>THE NETHERLANDS AND BELGIUM</b> Pie Medical Benelux B.V. P.O. Box 1132, 6201 BC Maastricht Tel. +31 43 3824650, Fax +31 43 3824651 benelux@pie.nl</p>	<p><b>UK</b> Esaote Europe BV UK Branch Office, 400 Thames Valley Park Drive, Reading, Berkshire. RG6 1PT Tel. +44 118 965 3500, Fax +44 709 288 0231 ukinquiries@esaote.nl</p>	<p><b>USA</b> Biosound Esaote Inc. 8000 Castleway Drive, P.O. Box 50858, Indianapolis, IN 46250 Tel. +1 317 813 6000, Fax +1 317 813 6600 info@biosound.com</p>
<p><b>BRASIL</b> Brazilian Direct Office Rua Tomas Carvalhal, 711, 04006-001 São Paulo SP Tel. +55 11 2589 0533 Fax +55 11 2589 0527 edson.lopes@esaote.com</p>	<p><b>ARGENTINA</b> Esaote Latinoamérica S.A. San Martín 551, Cuerpo 'C', Piso 8, (C1004AAK) Buenos Aires Tel. +54 11 4326 1832, Fax: +54 11 4328 1245 info@esaote.com.ar</p>	<p><b>INDIA</b> Esaote Asia Pacific Diagnostic Private Limited F-1, Level 1, Global Arcade, Near Global Business Park M.G. Road, Gurgaon (Haryana)-122002 Tel. +91 124 4775600, Fax +91 124 4775699 info@esaote.in</p>	<p><b>HONG KONG AND FAR EAST</b> Esaote China Ltd 18/F, 135 Bonham Strand Trade Centre, 135 Bonham Strand, Sheung Wan, Hong Kong Tel. +852 2545 8386, Fax +852 2543 3068 esaote@esaotechina.com</p>	<p><b>CHINA</b> Esaote Shenzhen Medical Equipment Room 2608, Tower B, Beijing Global Trade Center, 36 North Third Ring Road East, Dongcheng District, 100013, Beijing Tel. +86 010 58257766, Fax +86 010 52257760</p>	<p><b>RUSSIAN FEDERATION AND CIS</b> Esaote S.p.A. 18 Leningradsky prospekt Off. 5 and 6, Moscow 125040 Tel. +7 495 232 0205, Fax +7 495 232 1833 esaotemoscw@yandex.ru</p>